

February 2022



ENGLISH VERSION

Olympic Games Training Center



creps-paca.fr

Aix-en-Provence - Antibes - Boulouris / Saint-Raphaël



The Provence – Alpes Côte d'Azur Center of resources, expertise, and athletic performance is one of 17 CREPS centers composing the Ministry of Sports' national network of establishments.

CREPS is part of the "Grand INSEP" network. It is labeled « Olympic Games Training Center », by the OCOG (Organizing Committee for the Olympic Games) of Paris 2024.

Contacts CREPS

Aix-en-Provence site

62 Chemin du Viaduc - CS 70445 13098 Aix-en-Provence cedex 2

Phone. 04 42 93 80 00

Reception desk : **Corinne LATIL**

Phone. 04 42 93 80 00 - 06 08 37 78 41

reservations.aix@creps-paca.sports.gouv.fr

High level sport département : **Éric LE-CHANONY**

eric.le-chanony@creps-paca.sports.gouv.fr

Phone. 06 49 46 59 59

Antibes site

Avenue du 11 novembre – BP 47 06601 Antibes cedex

Phone. 04 92 91 31 31

Reception desk : **Mélanie GAILLOT**

Phone. 06 46 60 66 94 - 04 92 91 31 31

accueil.antibes@creps-paca.sports.gouv.fr

High level sport département : **Anne KEMPF**

anne.kempff@creps-paca.sports.gouv.fr

Phone. 06 80 26 34 56 - 04 92 91 31 23

Boulouris / Saint-Raphaël site

346 Boulevard des Mimosas CS 40501 83707 Saint-Raphaël cedex

Phone. 04 94 40 27 40

Reception desk : **Karine CHERIFI**

Phone. 06 26 91 46 69 - 04 94 40 28 91

accueil.boulouris@creps-paca.sports.gouv.fr

High level sport département : **Marian MALAQUIN**

marian.malaquin@creps-paca.sports.gouv.fr

Phone. 04 94 40 27 61—06 20 58 55 53

Aix-en-Provence Facilities

www.creps-paca.fr/360/aix

Boardroom

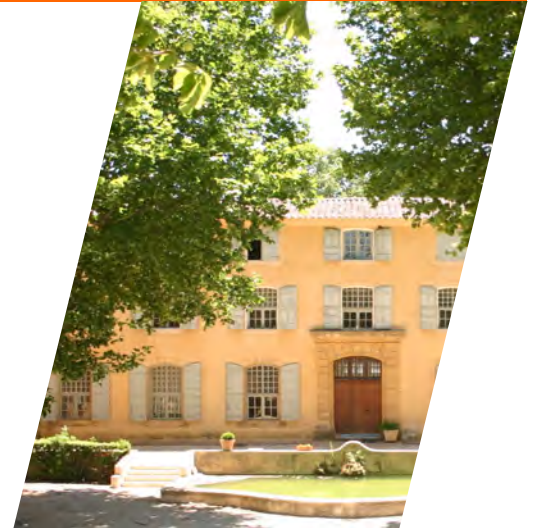


Can accommodate up to 40 people
Projector available

Classrooms



13 rooms able to accommodate 10 to 30 people
Projectors available



Auditorium



Passageway and platform for optimum viewing
Able to accommodate up to 180 people
Projector available
Adapted sound system

Aix-en-Provence Facilities

www.creps-paca.fr/360/aix

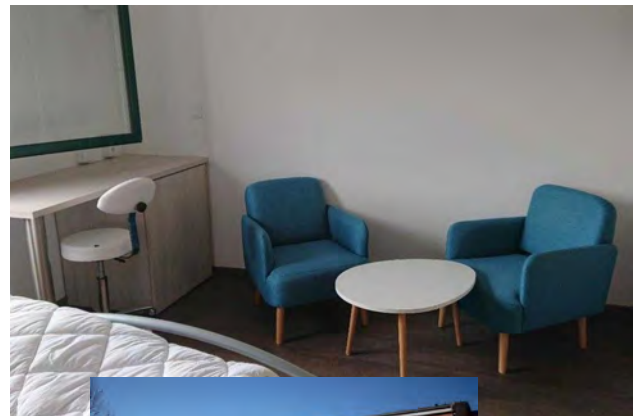
Médical service



Physical Therapy



Accommodation



Parking



School periods: 70 beds (58 rooms)
Vacation periods: 140 beds (75 rooms)
Bathroom in each room

200 spots available
Private parking, closed from 10 p.m. to 6 a.m.

Aix-en-Provence Facilities

www.creps-paca.fr/360/aix

Restaurant

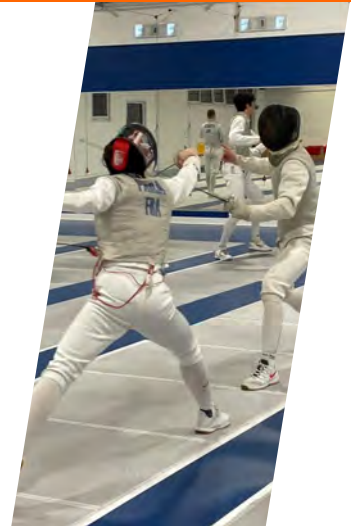


Seats up to 120 people. High tables
Tables outside

Sainte-Victoire room



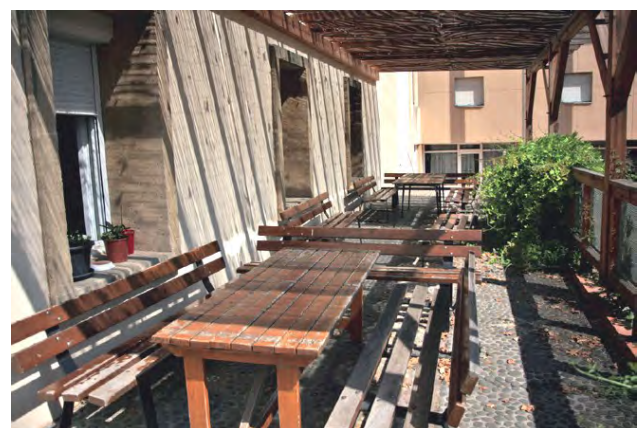
Seats up to 25 people
Private meals



Cafeteria



Entirely renovated
With external opening



Aix-en-Provence Facilities

www.creps-paca.fr/360/aix

Weight room – physical training



320 m² – entirely equipped



Basketball / team sports court



900 m² – 6 baskets

Laser shooting range



12 indoor lanes
4 outdoor lanes

Fencing



675 m² – 15 regulatory lanes

The fencing hall has been entirely renovated. It regularly hosts teams from France and abroad.

Aix-en-Provence Facilities

www.creps-paca.fr/360/aix

Track



250 meters, 6 synthetic lanes

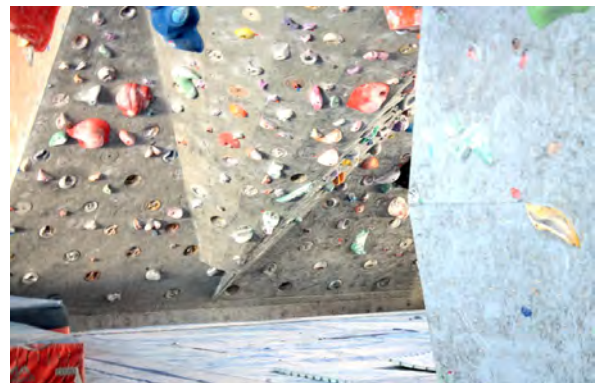


Rugby/ Soccer Fields



2700 m², 5400 m²

Climbing



Rock walls / 375 m²

Rugby: the French rugby sevens team chose the Aix-en-Provence site for its final training for the Tokyo Olympic games.

Aix-en-Provence Facilities

www.creps-paca.fr/360/aix

Two multifunctional hardwood floor rooms



180 m² and 256 m² – two multi-use rooms

Dojang



270 m² / 2 combat areas

Two new permanent structures
within CREPS: taekwondo
and badminton



Weightlifting room



150 m²

Badminton



2 regulatory badminton courts

Aix-en-Provence Facilities

www.creps-paca.fr/360/aix

Tennis



3 outdoor courts

Beach-volley / Beach-soccer



600 m² / 2 courts



Squash



4 regular courts and a glassed court

Near the Aix-en-Provence site

www.creps-paca.fr/360/aix

Tree Climbing Course



In front of CREPS

<http://www.indianforest-aix.fr/>

Aix-en-Provence Arena



7 kms / approx. 4 miles from CREPS.

<https://www.arenaaix.com/fr/arena-dupays-daix>

Numerous pools are close to CREPS

www.agglo-paysdaix.fr/sports/piscines/etablissements.html



Sainte-Victoire



10 km / approx. 6 miles from CREPS.

www.aixenprovencetourism.com/decouvrir/aix-en-provence/montagne-

Pool



Antibes facilities

www.creps-paca.fr/360/antibes

ZEPHIR facility



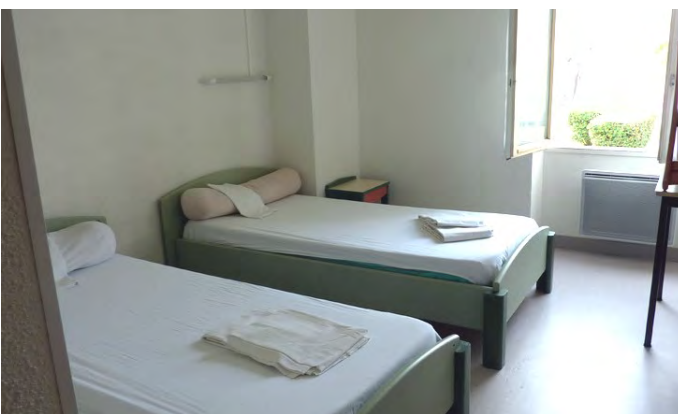
Accommodates up to 200 people
Ideal for conferences or gatherings
Heated, lighted, visitor parking

Classrooms



15 rooms accommodating 10 to 50 people
Projectors available

Accommodation



Parking



90 spots available
Private parking, secured by an automated
barrier with access code

Sea kayaking and Standup Paddleboarding (SUP)



On site, 100 m from the beach
Possibility to go out on the water when accompanied

38 rooms reserved for training throughout the
year (67 in July/August)
14 double rooms, 12 single rooms

Antibes facilities

www.creps-paca.fr/360/antibes

Restaurant



Accommodates up to 190 people
3 dining rooms

« La guinguette »

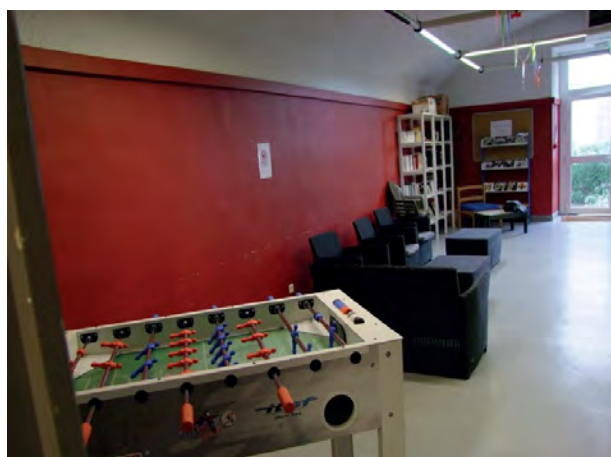


Ideal for reception
Direct view of the Antibes port and the old town

Rest areas



Cafeteria



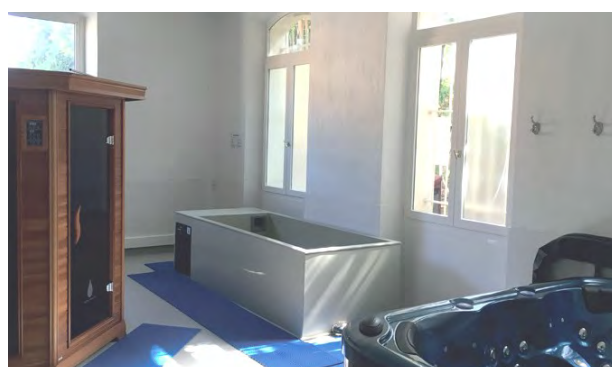
Antibes facilities

www.creps-paca.fr/360/antibes

Thermo Training room



Sauna - balnéothérapie



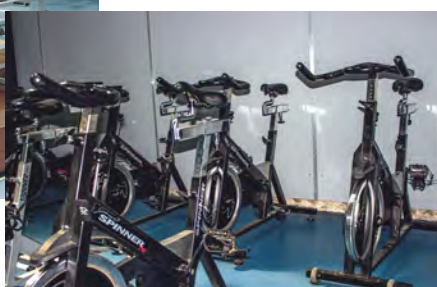
Medical / physical therapy



City park



Bodybuilding / physical training



Entirely equipped

Near the Antibes site

www.creps-paca.fr/360/antibes

Fort Carré beach



Azur Arena



In the “Trois Moulins Zone,” approx. 10 km / 6 miles from CREPS

Port VAUBAN



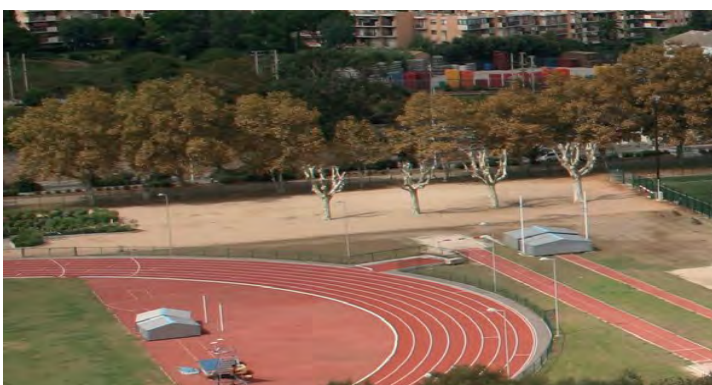
11 slips for CREPS, boat launching spot
6 first class, 3 diving boats, 2 safety boats

Nautical Stadium



About 500 meters from CREPS, the Antibes' nautical stadium (two 50-meter outdoor pools, heated and open during the year, a 25-meter indoor pool, and a recovery pool)

Track



At a close proximity, a regulatory running track

Boulouris facilities

www.creps-paca.fr/360/boulouris

Ile d'Or room



Seats 120 people Projector available
Podium and two adjoining classrooms

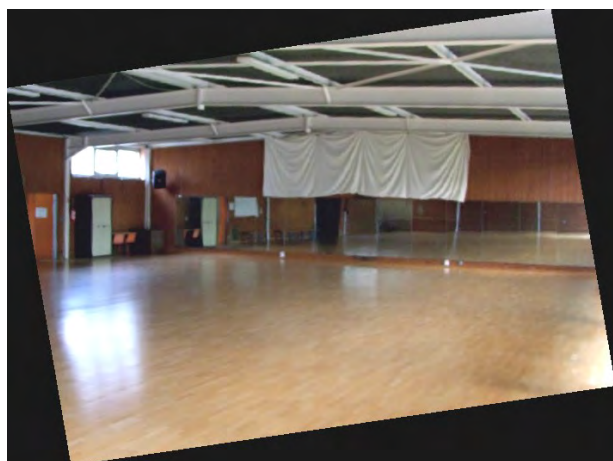


Classrooms



12 rooms that accompany between 5 and 30 people

Gym space

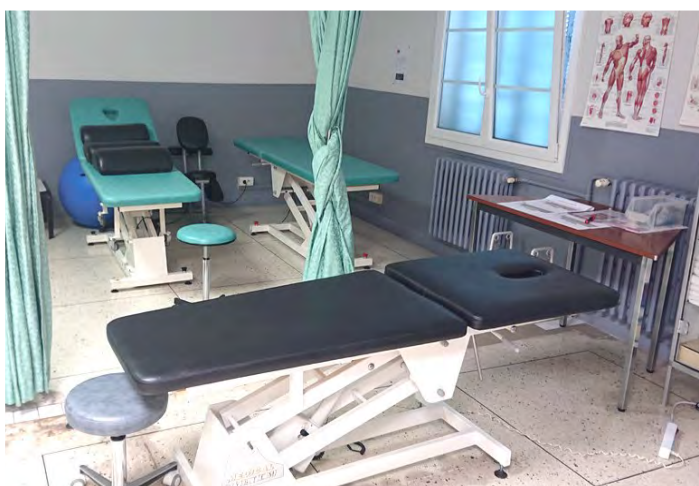


Seats 200 people. Convertible into an auditorium

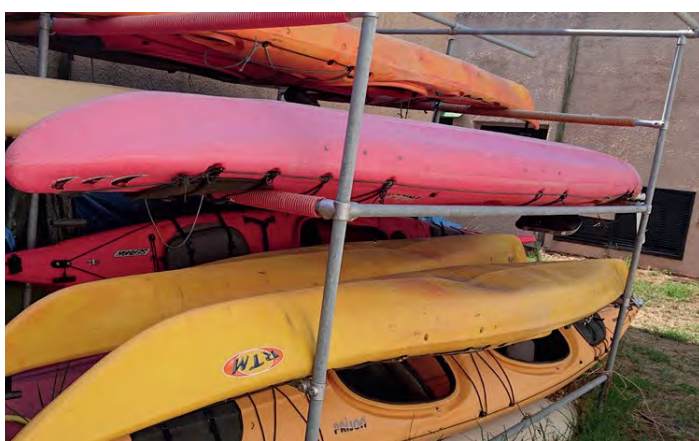
Boulouris facilities

www.creps-paca.fr/360/boulouris

Medical Service / physical therapy



Sea kayaking and Standup Paddleboarding (SUP)



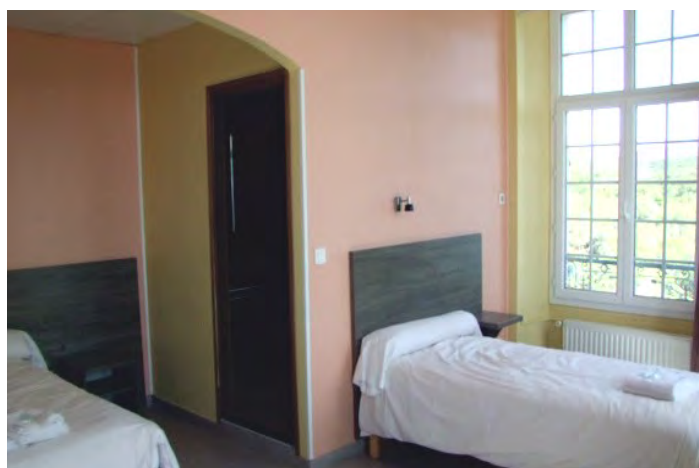
On site, 100 m from the beach
Possibility to go out on the water when accompanied

Mountain biking fleet



Possible to go out on the CREPS grounds (11 km / approx. 7 miles of trails) or in the Esterel Massif

Accommodation

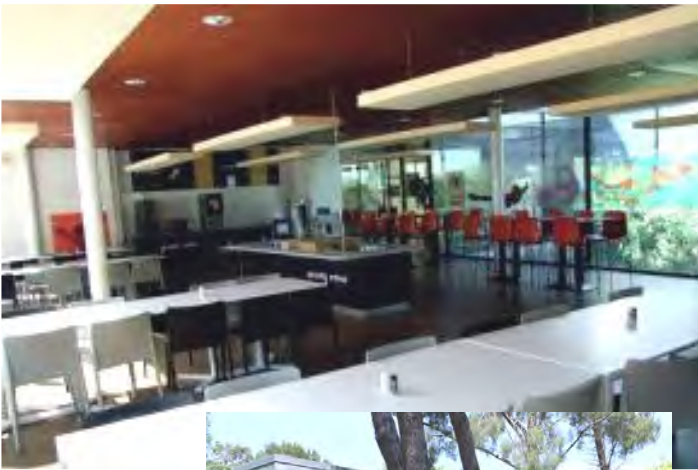


School periods: 75 beds (39 rooms). Vacation periods: 180 beds (70 rooms)

Boulouris facilities

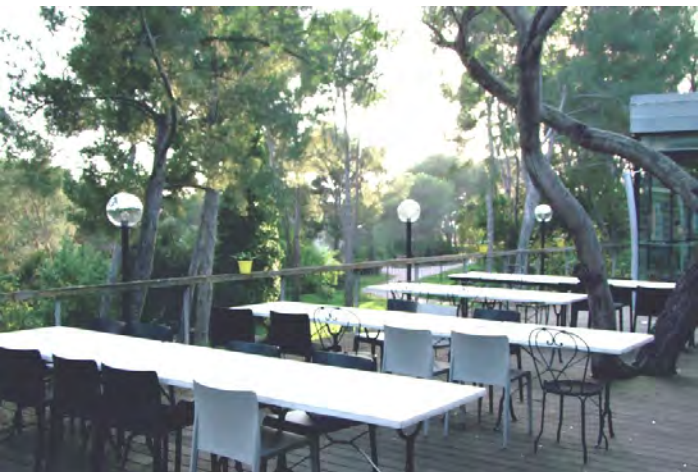
www.creps-paca.fr/360/boulouris

Restaurant



Accommodates up to 200 people

Terrace



Accommodates up to 80 people
Adjacent to the restaurant, with a view of the pine forest and sea



Cafeteria



Seats up to 80 people
Meeting space, television room
Hot and cold drinks
At the counter or self service
Has the possibility of private meals

Parkings

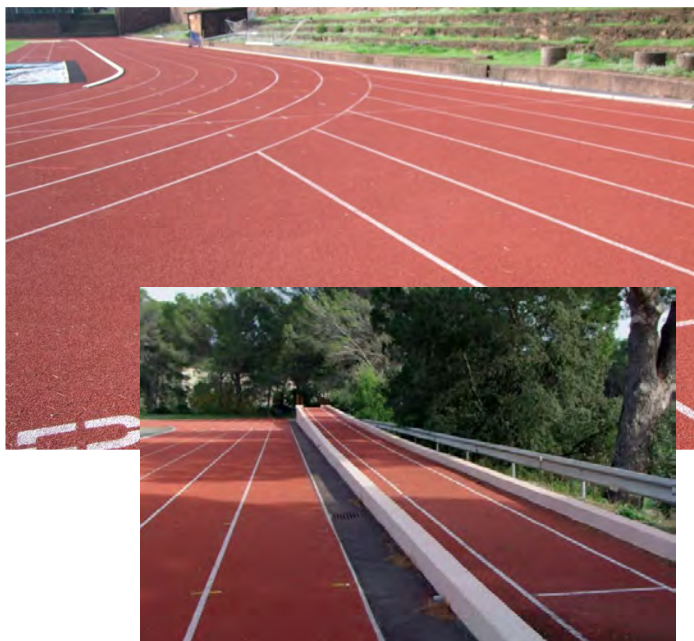


200 spots

Boulouris facilities

www.creps-paca.fr/360/boulouris

Track



Up to date, regulatory 400 m track
Equipped with an “overspeed” track

Grassed area



In the center of the track

2 ranges for long throws (discus, hammer),
near the athletics stadium



Covered multi-sport facility



1377 m² of tartan flooring, 6 lanes, basketball
baskets, long jump, high jump, pole vaulting.
Other uses (combat, aikido, etc.). Illuminated

Throwing range



Boulouris facilities

www.creps-paca.fr/360/boulouris

Gymnasium 1



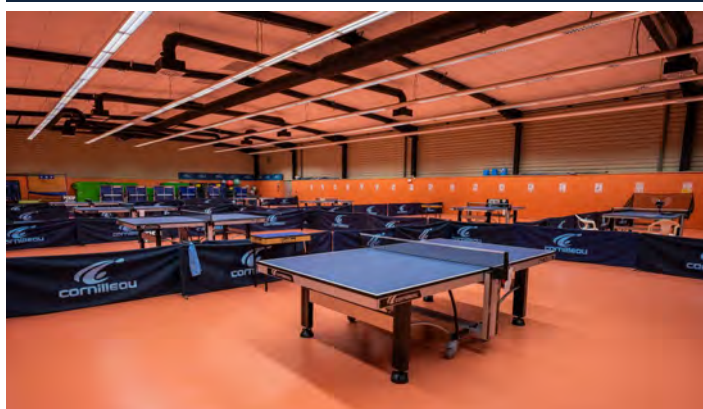
1056 m² in Taraflex, 3 volleyball courts, 1 handball court, 4 basketball courts

Gymnasium 2



913 m² of hardwood flooring
Volleyball, handball, basketball and 5 badminton courts

Table tennis



1815 m² room. 16 tables



Multipurpose room



148 m² of sprung floor. Mirror

Fitness room



360 m² of hardwood flooring. Mirror
Sound system

Boulouris facilities

www.creps-paca.fr/360/boulouris

Tennis courts



8 GreenSet tennis courts. 2 recreational courts
Illuminated

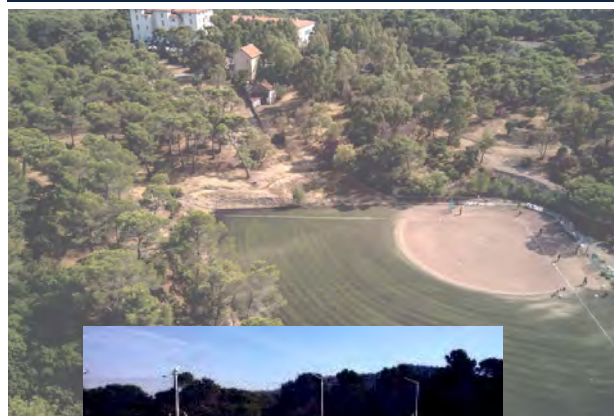
Archery range



1 "long distance" range, 8 targets
1 range with 6 mobile targets
Accommodates up to 36 shooters



Softball



Regulatory softball field

Beach-volley



80 m² court

Boulouris facilities

www.creps-paca.fr/360/boulouris

Olympic Mountain biking Course



Length: approximately 4,5 km / 3 mi

Drop: about 150 meters

Up hill and down hill sectors, which include a more direct ascent and a more substantial descent

A learning and introductory zone, which allows, through different educational and dynamic sessions, the ability to practice the technical foundations of mountain biking
A pump track completes the site

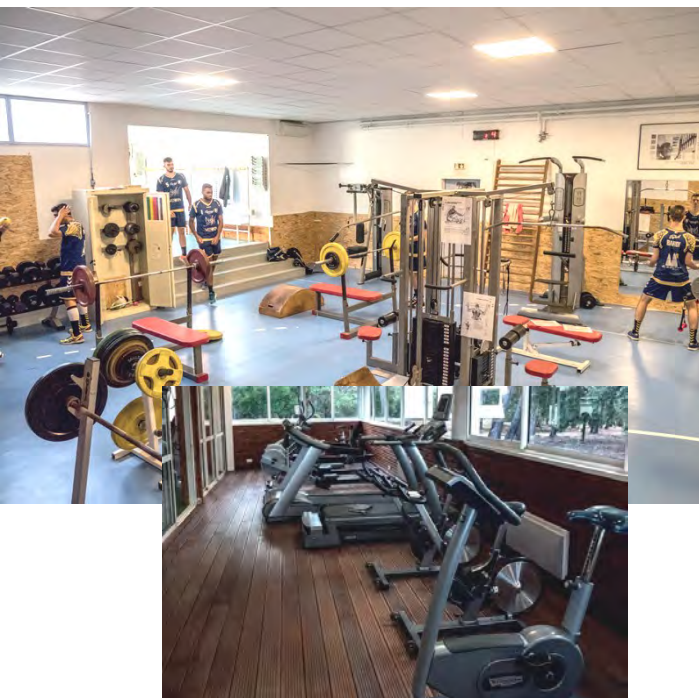


Sports in nature



Walking trails approx. 15 km / 9 mi and longer, with orienting equipment available

Weightlifting



400 m² entirely equipped
Strength training and Cardio

Recovery



Stretching room, sauna, massage jets, Jacuzzi, cold baths, testing room

Near the Boulouris site

www.creps-paca.fr/360/boulouris

Recreation center



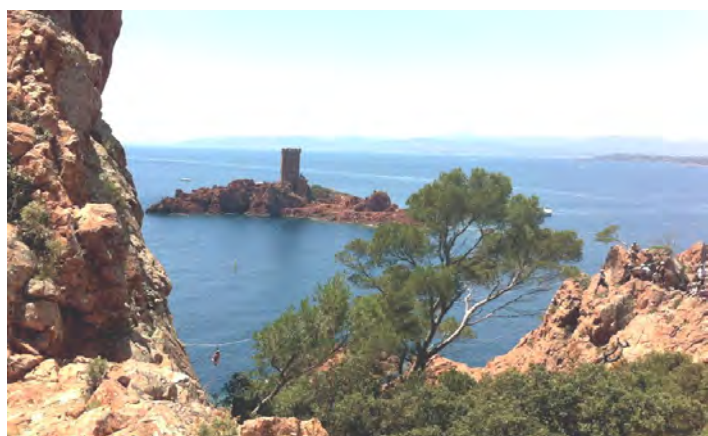
European Sports Recreation Center (CERS)
Saint-Raphaël, 1 km/ 0.6 mi. In partnership with CREPS

Boulouris beach



Beach about 100 m from

Natural climbing site



« Village-vacances »



“Soleil vacances” CREPS partner
Close proximity to the site, if needed, prominent
placements included

The Esterel massif



The Massif extends ...
60 km²/ 23 mi² of state-owned forest
Ideal for hiking and mountain biking

Natural rock climbing site, about 1 km/ 0.6 mi from
CREPS

Near the Boulouris site

www.creps-paca.fr/360/boulouris

Olympic pool



Saint-Raphaël Olympic-sized pool. About 1 km/ 0.6 mi from CREPS

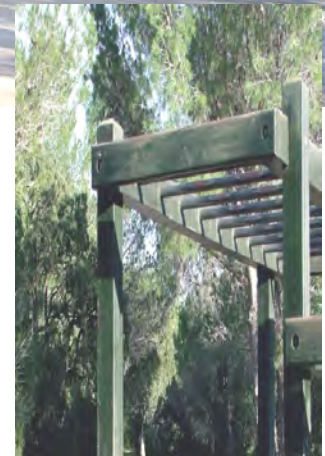
Natural base / Fréjus



135 hectares/ approx. 334 acres of “natural sport” space at the edge of the sea
Ideal for physical training sessions and running
About 10 km/ 6 mi from CREPS



Exercise trails



Rustic trails equipped with physical activity equipment
At a close proximity to CREPS, 2100 m
Equipped with physical training units

Three Site Locations



Aix-en-Provence

62 chemin du viaduc, Pont de l'Arc -
CS 70445

13098 AIX-EN-PROVENCE Cedex 2

Natural and urban environment, of
12,5 hectares / 31 acres

15 minutes from the city's center

TGV station (3 hours from Paris) :

15 minutes

Airport : 25 minutes

Marseille (2024 Olympic sailing site):

40 minutes

At the intersection of "Lyon – Nice –
Gap – Marseille" highways

Antibes

Avenue du 11 novembre – BP 47
06601 ANTIBES Cedex

At the foot of "Fort Carré," in the
heart of Antibes' Port Vauban

Direct sea access

Nice Côte d'Azur airport:

20 minutes

Antibes SNCF station:

5 minutes walking



Boulouris / Saint-Raphaël

346, Bd des Mimosas - CS 40501
83707 SAINT-RAPHAËL Cedex

Situated at the heart of an 83
hectare/ 205-acre wooded park

Direct access to the edge of the
sea and the Esterel Massif

The city's center and Saint-

Raphaël station : 10 minutes

TGV to Paris: 4 hours and 30

minutes

Nice Côte d'Azur Airport :

50 minutes